

1551/1555

BOND STREET

AT ROUTE 59

2,010 - 9,616 SF

1551-1555 BOND STREET - NAPERVILLE

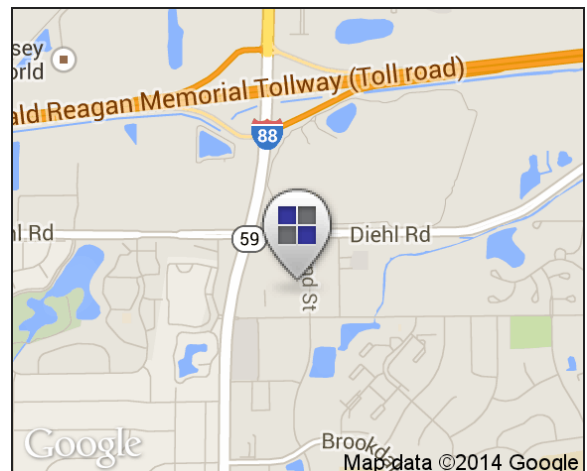
Modern Single Story Space with Continuous Glass Window Line

11' CEILING WITH TREMENDOUS NATURAL LIGHT | IMMEDIATE ACCESS TO I-88



BUILDING FEATURES

- Class A single-story
- Convenient direct access into suites
- Prebuilt medical suite available
- Building façade signage available
- Independently controlled HVAC
- I-88 and Route 59 interchange: Less than 1/2 mile away
- Fox Valley Mall: Less than 2 1/2 miles away



FOR MORE INFORMATION OR TO ARRANGE A TOUR, PLEASE CONTACT:

JOHN MILLNER
630.225.2602 jmillner@bradfordallen.com

ALLISON REYNOLDS
630.225.2603 areynolds@bradfordallen.com

EXCLUSIVE LEASING AGENT

 BRADFORD ALLEN

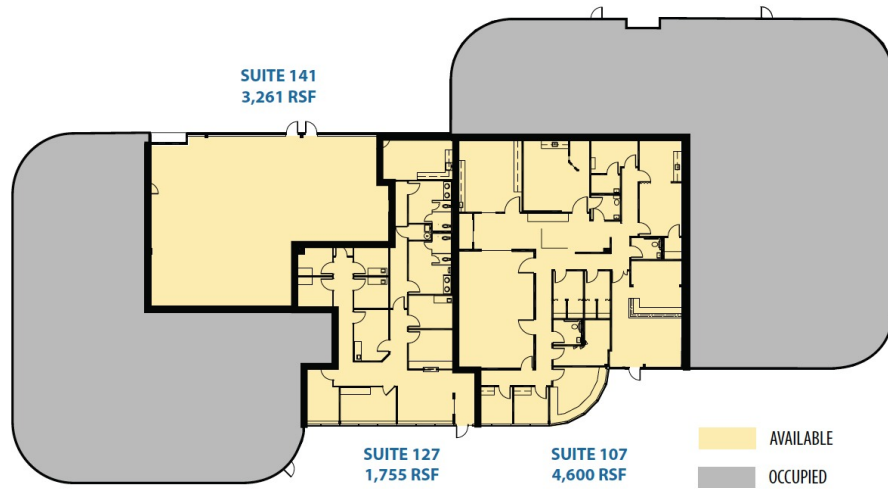


1551/1555

BOND STREET

AT ROUTE 59

SUITE 107 - 141
3,261 - 9,616 SF



EXCLUSIVE LEASING AGENT

 BRADFORD ALLEN

 TCN
WORLDWIDE



FOR MORE INFORMATION OR TO ARRANGE A
TOUR, PLEASE CONTACT:

JOHN MILLNER
630.225.2602 jmillner@bradfordallen.com
ALLISON REYNOLDS
630.225.2603 areynolds@bradfordallen.com

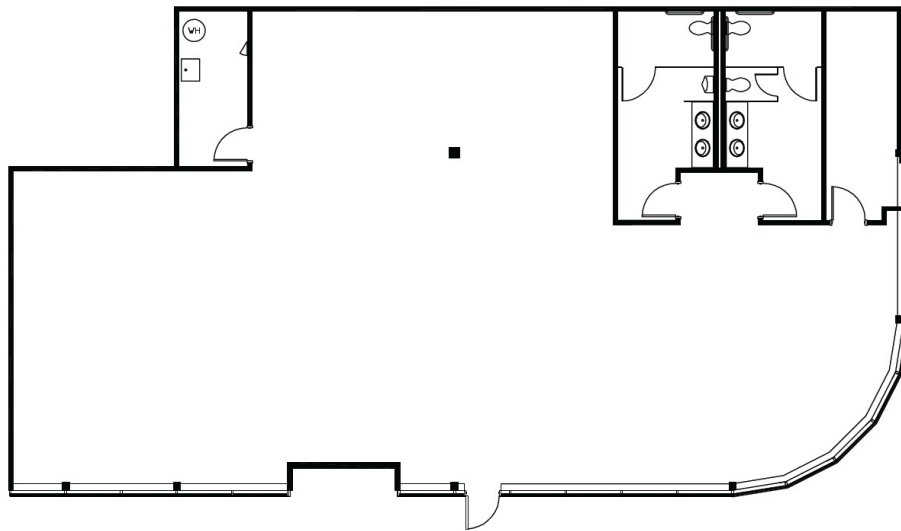
1551/1555

BOND STREET

AT ROUTE 59

SUITE 117

3,282 SF



EXCLUSIVE LEASING AGENT

 **BRADFORD ALLEN**

 **TCN**
WORLDWIDE



FOR MORE INFORMATION OR TO ARRANGE A
TOUR, PLEASE CONTACT:

JOHN MILLNER
630.225.2602 jmillner@bradfordallen.com

ALLISON REYNOLDS
630.225.2603 areynolds@bradfordallen.com

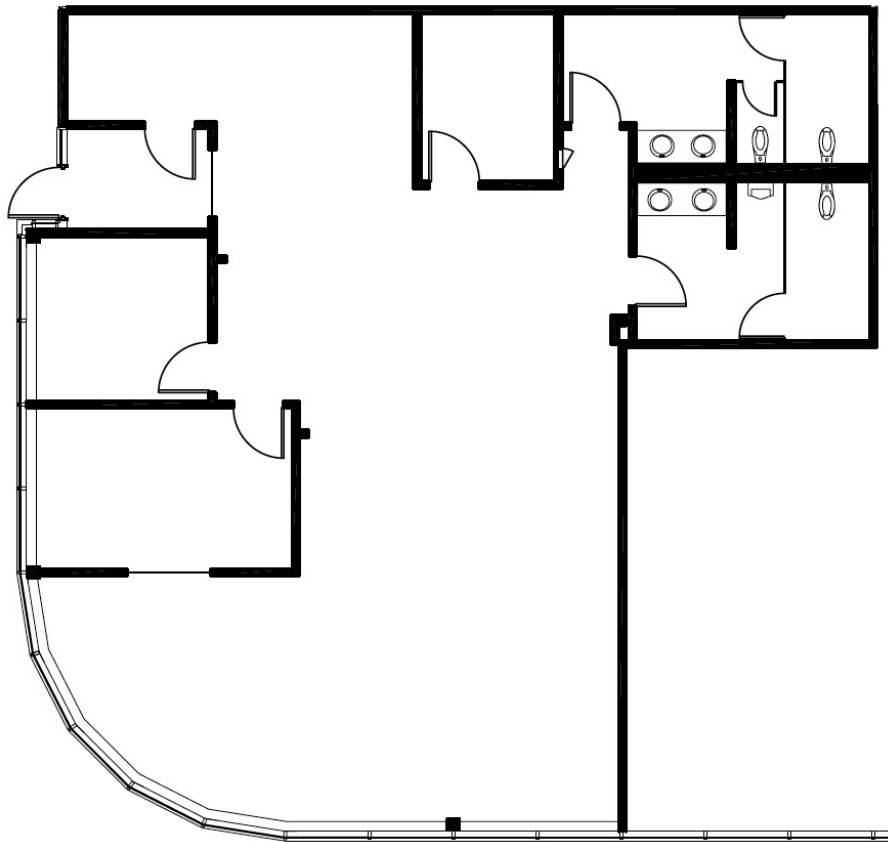
1551/1555

BOND STREET

AT ROUTE 59

SUITE 139

2,010 SF



EXCLUSIVE LEASING AGENT

 BRADFORD ALLEN

 TCN
WORLDWIDE



FOR MORE INFORMATION OR TO ARRANGE A
TOUR, PLEASE CONTACT:

JOHN MILLNER
630.225.2602 jmillner@bradfordallen.com

ALLISON REYNOLDS
630.225.2603 areynolds@bradfordallen.com